

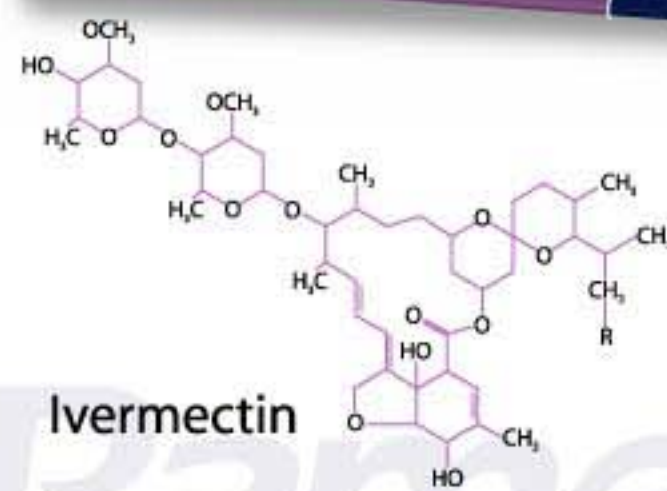
Ramectin®

Ivermectin & Rafoxanide

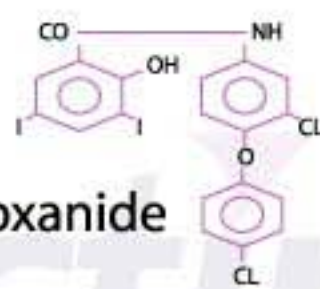
1 ML STRIKES THEM ALL

IVERMECTIN

RAFOXANIDE



Ivermectin



Rafoxanide

TRULY COMPATIBLE

Ramectin® ... JOIN THE PIONEERS...



Following extensive investigation and research, RAMECTIN® the preparation that combines two powerful ingredients has finally come into sight; it marks a new phase in Endectocides.

RAMECTIN® has been innovated recently to meet the acute field needs, it is a combination of Rafoxanide and Ivermectin, comprising a unique combination that really won't let it go, carefully formulated to deliver the needed action into the intruders!

COMPOSITION

- Each 1 ml contains:
- Ivermectin 10 mg
- Rafoxanide 125 mg

1 m l s t r i k e s t h e m a l l

WHERE INTEGRATED SOLUTION IS IN NEED...

RAMECTIN® with its two potent ingredients can insure you an unprecedented range of efficacy that would effectively comprise;

1 ROUND WORMS; *Haemonchus* spp., *Bunostomum* spp., *Trichuris* and *Oesophagostomum* spp., *Dictyocaulus* spp., *Chabertia* spp., *Strongyloides* spp., *Cooperia*, *Ostertagia ostertagi*, *Nematodirus*, and *Trichostrongylus* spp.



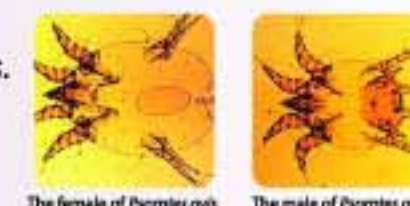
2 LARVAL STAGES of TISSUE INVADING MAGGOTS; *Hypoderma* spp., *Dermatobia* spp., *Oestrus ovis*

3 LIVER FLUKES; Different life stages of *F. hepatica* and *F. gigantica*, with efficacy that would cover those at the early immature stages.



4 SUCKING LICE; *Linognathus virtuli*, *Haematopinus euroyternus*, *Salenopotes capillatus*.

5 MITES; e.g. *Psoroptes ovis*.



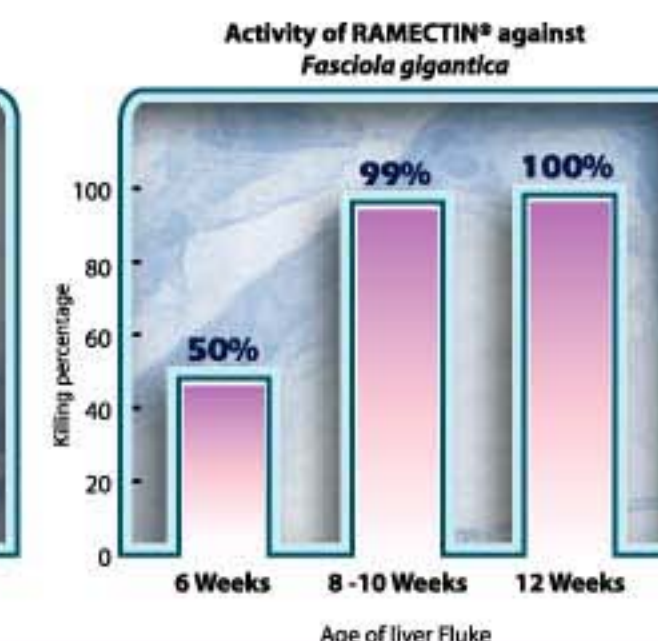
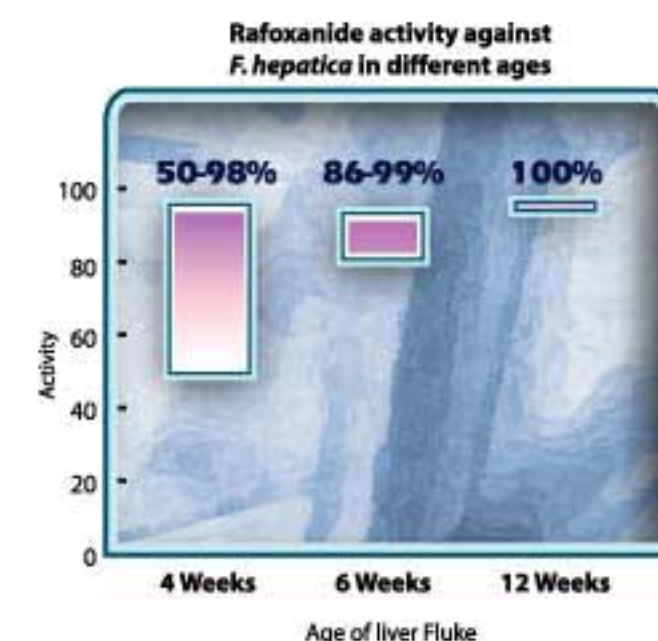
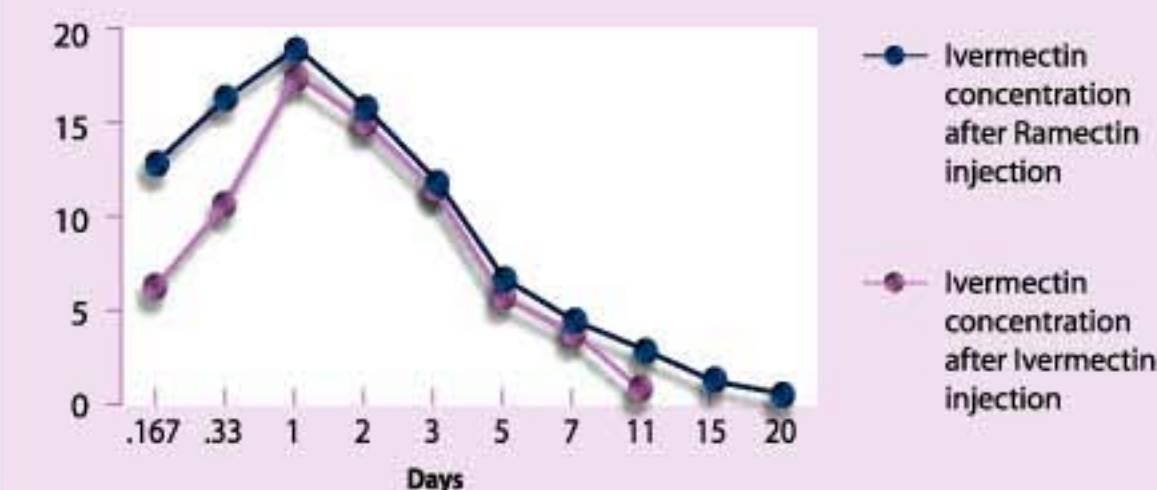
Ramectin® ... FOR A STEADY DEPENDABLE PERFORMANCE...

RAMECTIN® in both field and in vitro had shown excellent activity that would comprise liver flukes, RAMECTIN is a pioneer endectocide and among the only ones which would combine an endoparasite with an ectoparasite in one shot.

Ramectin® .. REWARDING DIFFERENCE

RAMECTIN® with its unique pharmacological behavior would insure a better lethal effect over the intruders with a larger AUC (Area Under Curve) in its disposition.

Mean Plasma Concentration (n = 9) of Ivermectin obtained after S.C. injection of Ramectin and after S.C. injection of Ivermectin alone at a single S.C. injection of 200 µg / kg body weight.



M u l t i p l e p r o b l e m s ... S i n g l e a n s w e r